



CAMBODIA REDD+ PROGRAMME

Progress made by the MRV/REL Technical Team and plans for the future

8th Meeting of the UN-REDD and FCPF Programme Executive Board

Mr. Leng Chivin



Progress

MRV/REL technical team met 13 times since January 2014

- Many discussions and inputs were made and the work plan was finalized during 9th MRV/REL meeting (6th May, 2014). The contents of the work plan covers: Outputs, Activities Plan (Feb-Dec, 2014), Description of activities, Responsible person, Memo, Where, Notes, Materials made, Timeline.
- Follow-up activities and progress have been made through MRV/REL TT meetings to date. Several of the activities in the work plan will be supported through the UN-REDD, JICA and other supporting frameworks (Eg. FCPF)



MRV/REL TT work plan covers seven (7) outputs:

- 4.1 National MRV/REL (Capacities and Operation)
- 4.2 Develop National Forest Monitoring System (NFMS) plan
- 4.3 Design the Satellite Land Monitoring System (SLMS) to provide Activity data for REDD+ related
- 4.4 Design a National Forest Inventory (NFI) to develop emission and removal factors for REDD+ related activities
- 4.5 Development of Cambodia RLs/REs framework
- 4.6 Support development of a REDD+ related GHG Reporting System
- 4.7 Develop action plan for 2015



Summary of key achievements:

4.1 National MRV/REL (Capacities and Operation)

Capacity building:

- NFI field training (three times)
- Ground truth training in mangrove area
- eCognition software operation training (gap identification)
- Land Cover Classification training, etc.

Operation:

- Established activity Work Plan together with UN-REDD, JICA and FFPRI
- Budget allocation



4.2 Develop National Forest Monitoring System (NFMS) plan

- Scope and elements of NFMS were clarified
- Forest definition was reviewed, e.g. strategy to establish the forest land cover definition, threshold value for crown cover, tree height and minimum size of forest land
- Production methods of land use/cover maps were examined and determined
- General time schedule for the mapping was prepared



4.3 Design the Satellite Land Monitoring System (SLMS) to provide Activity data for REDD+ related

- Methodologies for land use/cover mapping using satellite data were studied and determined
- Particularly, method to use eCognition for segmentation process was examined
- Land use/cover classes for maps to be used for Initial REL/RL calculation were examined and proposed



Harmonization of support and methodologies for Initial REL/RL calculation

- Cooperation of four parties: FA, UN-REDD, JICA and FFPRI
- FA is the implementation agency and also responsible for coordination.
- Immediate products:
 - New land use/cover map using 2013 LANDSAT 8 data
 - 2010 FA map added with non-forest class information
 - 2005/6 FA map added with non-forest class information



Leading roles of the Four Parties

Party	Roles
FA	Main implementation body Also responsible for coordination
FFPRI	<ul style="list-style-type: none">• Segmentation for new mapping using 2013 LANDSAT8 data• Technical support from time to time including verification of new maps (methodology and number and distribution of verification points, etc.)• Establishment of ground truth database system
UN-REDD	<ul style="list-style-type: none">• Legend development• Classification of base map (2013)• Adding non-forest classes to 2005 FA map
JICA TA Team	<ul style="list-style-type: none">• Adding non-forest classes to 2010 FA map• Technical support from time to time, particularly for verification of new map



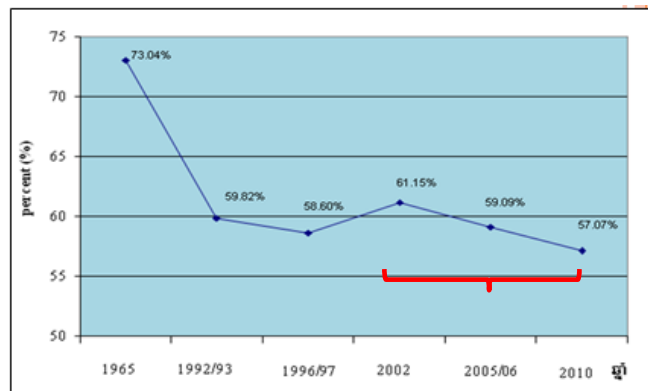
4.4 Design a National Forest Inventory (NFI) to develop emission and removal factors for REDD+ related activities

- Consultation workshop on NFI was held
- NFI design and Field Manual were made and field tested by March 2014.
- And now the documents are being peer reviewed.



4.5 Development of Cambodia RLs/RELs framework

- Discussed strategy for establishing REL/RL
- Provisionally selected reference period and number of epoch: 2002 – 2013
- 4 sets of C stock data (from 2002, 2004/5, 2010 and 2013 maps)
= 3 sets of emission/removal data



This graph shows change of the ratio of forest area since 1965

**CAMBODIA REDD+ NATIONAL
PROGRAMME**



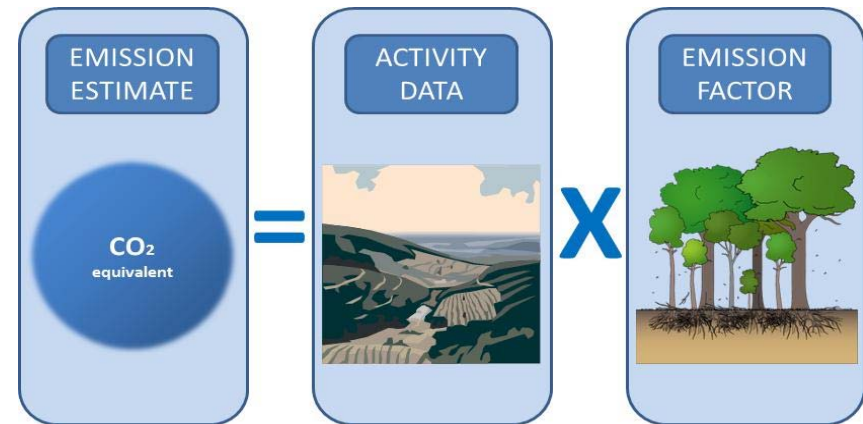
4.6 Support development of a REDD+ related GHG Reporting System

- Clarified difference among IPCC1996 (revised) and 2006 guidelines and IPCC 2003 guidance
- Analyzed procedures to calculate GHG in AFOLU sector.(JICA TA Team's Working Paper #8 and #9)
- Clarified activity data required for GHG inventory
- Training on GHG reporting will be conducted starting from August.



Forestry Interim Greenhouse Gas (GHG) Inventory report preparation

- Cooperation of three parties: GDANCP/MOE, UN-REDD, and JICA
- GDANCP is the implementation agency and also responsible for coordination.
- Training schedule:
 - Step 1. IPCC guidelines and software (Aug)
 - Step 2. Data analysis, practice with software (Sep)
 - Step 3. Review GHG calculation results (Oct)



4.7 Develop action plan for 2015 and 2016

- Complete three sets of land use/cover maps (2005/6, 2010 and 2013)
- Calculate Initial REL/RL
- NFI implementation plan & implementation
- Further design NFMS
- Design and establish database and web platform
- Improve emission factors



Thank You!

Leng Chivin

Email: lengchivin@gmail.com

Website: www.cambodia-redd.org

**CAMBODIA REDD+ NATIONAL
PROGRAMME**

