

Identifying drivers of deforestation and forest degradation (D&D) in Cambodia

Himawari Hotel, Cambodia

Date: 6th March, 2014,



UN-REDD PROGRAMME



Empowered lives.
Resilient nations.



Rationale

1. Limited data on drivers of D&D at country level
2. Inconsistence or lack of consent among relevant stakeholders on drivers of D&D data
3. No uniform tool to assess drivers of D&D in Cambodia, (while ASEAN is producing a tool..)
4. Promote national ownership in Monitoring, Reporting and Verification on drivers of D&D



Rationale (Con't)

5. Align with existing government policies and strategic development plan
6. Compliance with international best guidelines (UNFCCC, ARKN-FCC, and other conventions...)
7. Contribute to other development sectors in Cambodia (agriculture, environmental protection, ..)





Existing Data on Drivers of D&D

National Level

- Cambodia REDD+ Road map
- National Forestry Program (NFP)
- National Forest Cover Assessment
- FiA Strategic Management Plan
- FA and GDANCP Annual Report....

Others:

- National Statistic Information
- Population Growth Rate
- National Development Strategy...





Existing Data on Drivers of D&D Sub-national

(project based-, landscape based-, provincial based..)

- At least 5 project based- REDD+ initiatives in Cambodia (Oddar Meanchey, Seima,...)
- All FA and FiA cantonments and divisions
- Protected Areas Management (MoE)
- Selected NGOs, CF, CPA, CFi committees, and private sectors.
- Academia and others



How?

Step1: Review how and which drivers of D&D are identified in national policies (FA, FiA, and GDANCP)?

- Satellite images, field information,
- What level (National, Sub-national...)
- Key drivers/ agents of D&D



How?



Step2: Conduct gap analysis between approach used in ARKN- FCC and how drivers of D&D are identified in step1

- Gaps
- Comparability.....



How?



Step3: Assess feasibility for designing tool to identify drivers of D&D in Cambodia

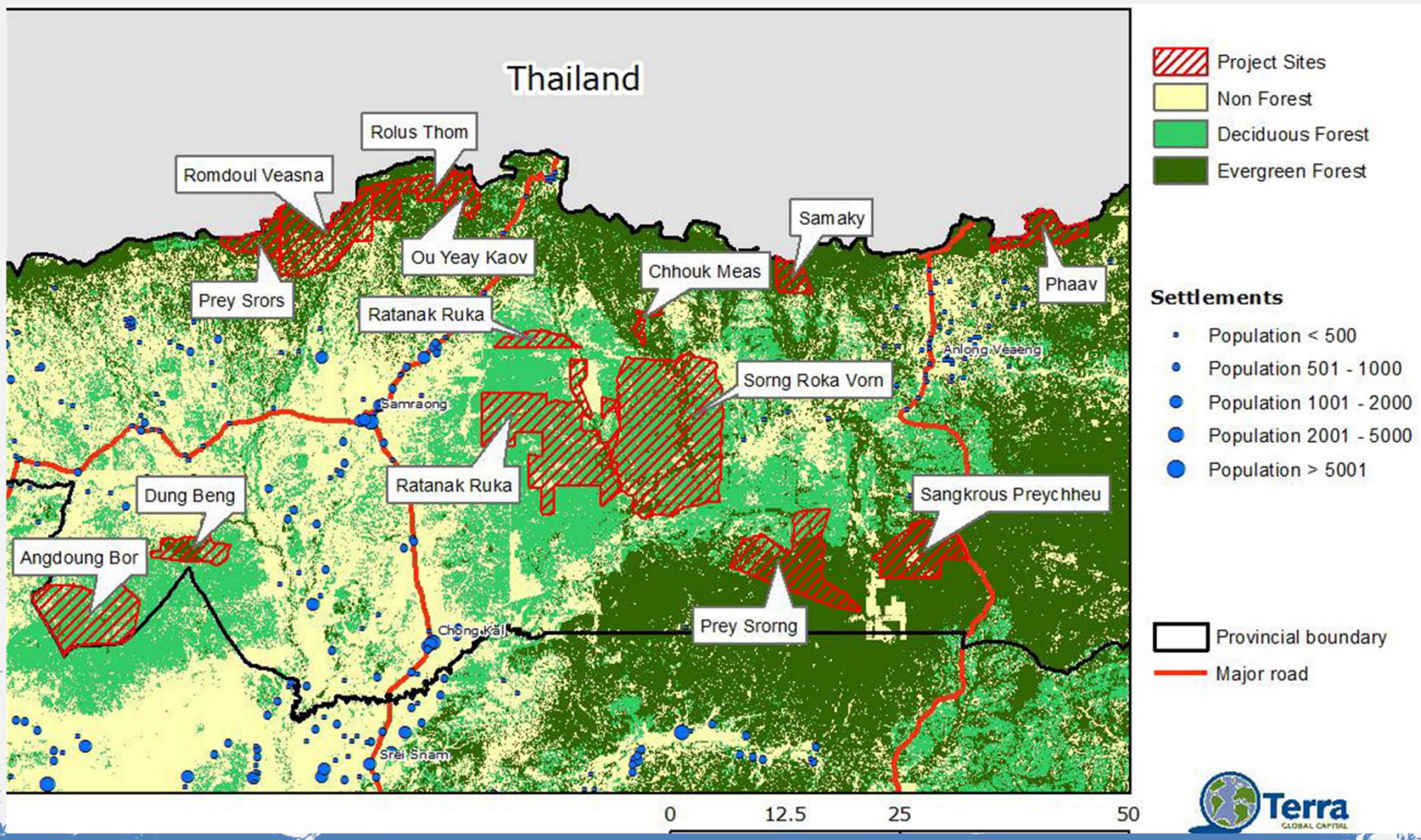
- Data sufficiency
- Approach compatibility
- What counts as drivers (natural, human-induced,...)
- Recommendations on tool to design



A case from Oddar Meanchey Community Forestry REDD+ Project, Cambodia



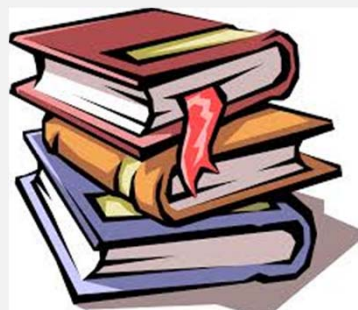
A case from Oddar Meanchey Community Forestry REDD+ Project, Cambodia



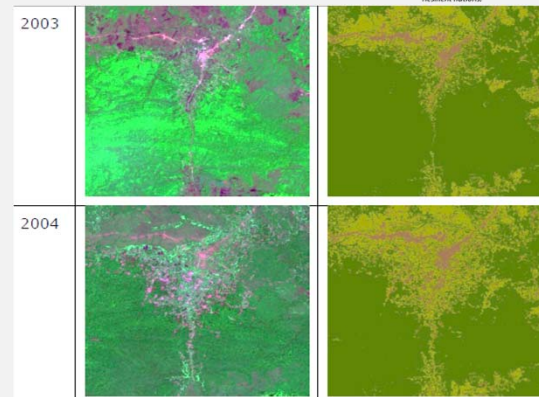
How Drivers of D&D are identified?



Household Survey Data



**Literature Review / Historical Data
/ Review Policies**



**Satellite Imageries interpretation
/ Forest Cover Assessment**



Expert Interview



Consultative Workshop / Stakeholder Meeting



**Participatory Rural
Appraisal
(PRA) Data**

D&D

Summary of project activities and targeted drivers of deforestation

Driver of Deforestation	Project Activities									
	1. Reinforcing land-tenure	2. Land-use plans	3. Forest Protection	4. ANR	5. Fuel-efficient Stoves	6. Livestock Protection from Mosquitoes	7. Agricultural Intensification	8. Natural Resource Management Projects	9. NTFP Development Activities	10. Fire Prevention
1. Forest clearing for land sales	●		●							
2. Conversion to cropland		●		●			●	●	●	
3. Conversion to settlements		●								
4. Fuelwood gathering			●		●	●				
5. Forest fires set to 'clean' the land			●				●			●
6. Forest fires induced by hunters			●							●
7. Illegal logging for commercial on-sale			●							
8. Timber harvesting for local use		●	●	●						
9. Large economic land concessions	●									
10. Timber concessions	●									

ANR = Assisted Natural Regeneration, NTFP = Non-Timber Forest Products

The relative importance of driver (*d*) in deforestation to the total deforestation, *contribution* $DF(d)$.

Drivers of deforestation	Importance [%]
1. Forest clearing for land sales	0.19
2. Conversion to cropland	0.39
3. Conversion to settlements	0.10
4. Fuelwood gathering	0.00
5. Forest fires induced to clear the forest understory	0.23
6. Forest fires induced by hunters	0.00
7. Illegal logging for commercial on-sale	0.10
8. Timber harvesting for local use	0.00
9. Large economic land concessions	NR
10. Timber concessions	NR



How drivers of D&D are identified?

These 10 drivers of D&D contribute to the total observed D&D rates

Identified drivers of D&D	How much?	How?
forest clearing for land sales and conversion to cropland or settlements	Est-2/3 of observed deforestation	satellite images
fuelwood gathering was equally important for deforestation as conversion to settlements	(10% of the total rate)	In country expert (interview and secondary data)
ELC and timber concession	N/A	<p>Due to:</p> <ul style="list-style-type: none"> - No formal contribution is attributed to the issuance - their rate varies drastically over time and is dependent on political factors
forest clearing for land sales and conversion to cropland by non-migrant people was equal.		

Key Notes:

- Both direct and indirect drivers of D&D are identified, but most of them are identified at the local level
- Pilot project proved that participating communities are able to address local drivers of D&D such as *small scale illegal logging...*, while drivers of D&D at the national level is better addressed by national policy, *such as ELC, and Timber Concession...*
- Pilot projects did identify the agents responsible for drivers of D&D
- All identified drivers of D&D in pilot project are representative for the whole province.



A case from Oddar Meanchey Community Forestry REDD+ Project, Cambodia



Migrant Encroachment in Forest Land Neighboring
Krous Prey Bordering the Samrong Rubber
Concession



Meang Ly Heng Sugar Concession
Neighboring REDD Project Site. (2008)

Reference: and Photo accreditation:

- All information about OMCFREDD were cited from VCS/PD, (TGC, PACT, FA, 2010)
- Photos: Mr. Kim Narong (WCS staff) and Mr. Yeang Donal (FEI staff)



Chhun Delux

E-mail: chhundelux04@yahoo.com

Thank You

Website: <http://www.un-redd.org>

