**CAMBODIA REDD+ PROGRAMME**

Current Updating on Cambodia Forest Reference Level and Workplan Implementation

01 December 2016
Preah Sihanouk province

- Mr. Chivin LENG , MRV/FRL Focal point
- MRV/FRL TT Team














TABLE OF CONTENTS


	Overview
	Current situation of FRL progress implementation
	Work plan of map 2016 and AA of change map
	Plan for FRL Improvement and Outlook

CAMBODIA REDD+ NATIONAL PROGRAMME

Overview

REDD+ at current situation

UNFCCC/COP19- Warsaw Framework or REDD+ Rules




Requirements
to implement
REDD+

National Strategy
(NS)
or
Action Plan (AP)


Safeguards &
Safeguards
Information
System (SIS)

National Forest
Monitoring System
(NFMS)

Forest Reference
Emission Level
(FREL) / Forest
Reference Level
(FRL)



Payments for
results





CAMBODIA REDD+ PROGRAMME

- First Submission to UNFCCC:** Has announced by RGC on 01 Nov. 2016
- Shearing information:** Was invited to share experiences in side event on Forest Reference Setting .







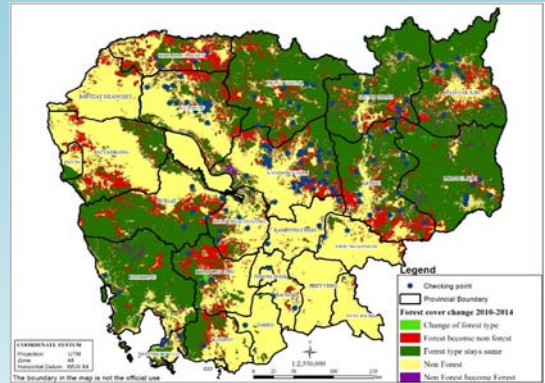


Progress on accuracy assessment of change 2006-2014

- 1st calculation of accuracy assessment is 84%, the result will improve after finish the field verification .
- 126 point were distributed in to 19 province for accuracy assessment field checking
- Calculate the final accuracy assessment by combine the result from high resolution image and field verification

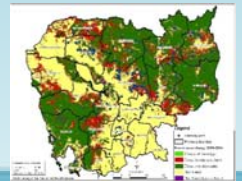
Progress on mapping 2016

- The visual interpretation will finish by December 2016
- Logical checking with map 2014
- Produce accuracy assessment of mapping 2016
- Final map and report



Work plan for Mapping 2016 and QA/QC of change map 2006-2014

No	Activities	Supporters	Progress
1	Preparation		
1.1	Image collection	FFPRI	Completed by April
1.2	Pre-Processing	FFPRI	Completed by April
1.3	Cloud Removal	JICA	Completed by May
1.4	Image Mosaic	JICA	Completed by May
1.5	Ground truth	FAO(FCPF)	Not yet implemented
2	Classification		
2.1	Segmentation	JICA	Completed by June
2.2	Sample selection (Ground truth) and field validation of change map 2006-2014	FFPRI/FAO	Collected information in field
2.3	Extraction of potential deforestation	JICA	Completed by June
2.4	Visual interpretation	JICA	Started from 4th July. Progress: 40%
2.5	Visual check and Editing	JICA	will implemented in December
2.6	Dissolve polygons by LULC class	JICA	will implemented in December
2.7	QAQC (topology check/consistency check)	JICA	will implemented in January
2.8	Produce Accuracy random sample point	JICA	will implemented in January



Cont.....

3	Accuracy Assessment		
3.1	Field Verification	FAO(FCPF)	will implemented in January-February
3.2	Hight Resolution Image verification	JICA	will implemented in January-February
3.3	Calculate Accuracy	JICA	will implemented in January-February
3.4	Calculate Accuracy of Change	FAO(FCPF)	December 2016
4	Workshop		
4.1	National workshop	FAO(FCPF)	March 2017
5	Reporting and Publish		
5.1	Reporting	FAO(FCPF)	March 2017
5.2	Translate Report	FAO(FCPF)	April 2017
5.3	Publishing	FAO(FCPF)	April 2017

Work plan for Outcome 4

Indicative Activities	Support programmes (provisional)	2016				2017			
		Q1	Q2	Q3	Q4	Q1	Q2	Q3	Q4
Output 1. Strengthen National MRV/REL Technical team and improve national capacity									
1.1. Support Technical Team to establish National Forest Monitoring System (NFMS)	FAO(FCPF)								
1.2. Strengthen and consolidate national framework through capacity building for the NFMS	FAO(FCPF)								
1.3 NFMS web-portal development and establish mechanism for data acquisition, storage and dissemination)	FAO(FCPF)								
Output 2. Improve data related to Activity Data, Emission Factors, GHG reporting									
2.1 Improve REDD+ Activity Data									
2.1.1.Undertake pilot study to develop methods to assess forest degradation	FAO(FCPF),FAO(SEPAL), EU-JRC								
2.1.2. Provide training on remote sensing and land use classification system	FAO(FCPF), EU-JRC, JICA, FFPRI								
2.1.3. Update time-series data on LULUCF	JICA, FAO(FCPF)								
2.2 Improve REDD+ Emission Factors									
2.2.1. Provide training on biomass modelling and allometric equation development	FAO(FCPF)								
2.2.2. Develop biomass models for selected forest classes	FAO(FCPF)								
2.3 Improve capacity for assessment of REDD+ GHG									
2.3.1 Support to LULUCF/AFOLU sector reporting and planning	UN-REDD TS, FAO (TCP)								
Output 3. Improve capacity for monitoring impacts of REDD+ interventions									
3.1.1 Develop options and capacities for forest monitoring and approaches to link national and subnational monitoring for REDD+	FAO(FCPF)								
3.2. Regular monitoring undertaken and feedback systems established to refine	FAO(FCPF)								

Out look

- Formed respond Cambodia's team to reflect to UNFCCC assessment.
- Some update points on FRL assessment report
- Achieving results on map 2016 by end of 2017
- Improving FRL
- Produce document report and dissemination



Initial Forest Reference Level for
Cambodia under the UNFCCC
Framework

Thank You!

Mr. Chivin LENG

lengchivin@gmail.com

Website: www.cambodia-redd.org / <http://www.un-redd.org>

**CAMBODIA REDD+ NATIONAL
PROGRAMME**

