



គម្រោងមូលនិធិភាពជាដៃគូកាបូនព្រៃឈើ

FOREST CARBON PARTNERSHIP FACILITY II

Project ID: No. 00096720

Morodok Techo Building, Lot No. 503, Sangkat Tonle Bassac, Khan Chamkar Morn, Phnom Penh, Cambodia

STANDARD LETTER OF AGREEMENT (LoA)

BETWEEN

**THE FOREST CARBON PARTNERSHIP FACILITY REDD+ READINESS PROJECT (FCPF) AND
THE GENERAL DIRECTORIAT OF ADMINISTRATION FOR NATURE PROTECTION AND
CONSERVATION (GDANCP) MINISTRY OF ENVIRONMENT (MOE)**

ON

SUSTAINABLE MANAGEMENT OF PHNOM KULEN NATIONAL PARK

Mr. Kim Nong,

1. Reference is made to the consultations between the REDD+ Taskforce Secretariat of the Forest Carbon Partnership Facility (FCPF) REDD+ Readiness Project (hereinafter referred to as "FCPF") in Cambodia and the General Department of Administration for Nature Protection and Conservation (GDANCP) Ministry of Environment (MoE) with respect to the realization of activities by the GDANCP in the implementation of the 1). Sustainable Management of Phnom Kulen National Parks" related to the FCPF REDD+ Readiness Project *Award ID: 00096720*, as specified in Attachment 1: FCPF Project Document, to which GDANCP/MoE has been selected as Implementing Partner (IP) for UNDP.

2. In accordance with the Project Document and with the following terms and conditions, we confirm our acceptance of the activities to be provided by the GDANCP/MoE towards the project, as specified in Attachment 2: Sustainable Management of Phnom Kulen National Park – Section C: Results framework. Close consultations will be held between GDANCP/MoE and FCPF Project-IP on all aspects of the Activities.

3. GDANCP/MoE shall be fully responsible for carrying out, with due diligence and efficiency, Activities in accordance with its own Financial Regulations and Rules and the UNDP revised Daily Subsistence Allowance (DSA) for Domestic Travel of Government counterparts dated 29 January 2015 as agreed by the Project Implementing Partner (PIP).

4. In carrying out the Activities under this Letter, PIP and FCPF donors do not accept any liability for claims arising out of acts or omission of GDANCP/MoE or its personnel, or of its contractors or their personnel, in performing the Activities or any claims for death, bodily injury, disability, damage to property or other hazards that may be suffered by GDANCP/MoE, and its personnel as a result of their work pertaining to the Activities.

5. Any subcontractors, including NGOs and or contractor under contract with GDANCP/MoE, shall work under the supervision of GDANCP/MoE. These subcontractors shall remain accountable to GDANCP/MoE for the manner in which assigned functions are discharged.

6. The total cost to support the implementation of activities as specified in Attachment 3: Schedule of Activities, Facilities and Payments is **USD 161,245 (US Dollar One Hundred Sixty-One Thousand Two Hundred Forty-Five only)**. Upon signature of this LoA, GDANCP/MoE will issue a request to FCPF-PIP according to the schedule of payments for the amount of **USD 161,245** in accordance with Attachment 2: Sustainable Management of Phnom Kulen National Park - Section F: Schedule of Activities, Facilities and Payments.

7. GDANCP/MoE shall not make any financial commitments or incur any expenses which would exceed the budget for the Activities as set forth in Attachment 3. GDANCP/MoE shall regularly consult with FCPF-PIP concerning the status and use of funds and shall promptly advise FCPF-PIP any time when GDANCP/MoE is aware that the budget to carry out these Activities is insufficient to fully implement the project in the manner set out in Attachment 2. FCPF-IP shall have no obligation to provide GDANCP/MoE with any funds or to make any reimbursement for expenses incurred by GDANCP/MoE in excess of the total budget as set forth in Attachment 3.

8. GDANCP/MoE shall submit a cumulative financial report attached with progress reports each quarter (30 June, 30 September 2019) and annual report (31 December 2019); each quarter (30 June, 30 September, 31 December 2019; 31 March 2020); and final report (30 June 2020) to FCPF-PIP through the FCPF National Project Manager in accordance with the indicative schedule as indicated in attachment 3. The format will follow the standard FCPF expenditure report (a model copy of which is provided as Attachment 3) FCPF-PIP will include the financial report by GDANCP/MoE in the financial report for FCPF Project," *Award ID: 00096720*.

9. GDANCP/MoE shall submit such progress reports relating to the Activities as may reasonably be required by the FCPF-PIP National Project Director in the exercise of his or her duties in according to the indicative schedule specified in Attachment 3: Schedule of Activities, Facilities and Payments.

10. GDANCP/MoE shall furnish a final terminal report within 60 days after the completion or termination of the Activities, including a list of non-expendable equipment purchased by GDANCP/MoE and /or certified financial statements and records (if applicable) related to such Activities, as appropriate, pursuant to its Financial Regulations and Rules.

11. Equipment and supplies that may be furnished by FCPF-PIP or procured through FCPF funds will be disposed as agreed, in writing, between FCPF-PIP and GDANCP/MoE.

12. Any changes to the Project Document which would affect the work being performed by GDANCP/MoE in accordance with Attachment 2 shall be recommended only after consultation between the parties.

13. For any matters not specifically covered by this Letter, the Parties would ensure that those matters shall be resolved in accordance with the appropriate provisions of the FCPF project document and any revisions thereof and in accordance with the respective provisions of the Financial Regulations and Rules of the GDANCP/MoE, FCPF-PIP and UNDP.

14. The arrangements described in this Letter will remain in effect until the end of the project, or the completion of Activities of GDANCP/MoE according to Attachment 2, or until terminated in writing (with 30 days' notice) by either party. The schedule of payments specified in Attachment 3 remains in effect based on continued performance by GDANCP/MoE unless it receives written indication to the contrary from FCPF-PIP.

15. Any balance of funds that is undisbursed and uncommitted after the conclusion of the Activities shall be returned within 60 days to FCPF-PIP.

16. Any amendment to this Letter shall be effected by mutual agreement, in writing,

17. All further correspondence regarding this Letter, other than signed letters of agreement or amendments thereto should be addressed to Dr. Chea Sam Ang, Under-Secretary of State, MoE, FCPF National Project Director, Mordok Techor Buling, No.503, Tonle Basac, Chamkar Mon, Phnom Penh, Cambodia.

18. GDANCP/MoE shall keep FCPF-PIP fully informed of all actions undertaken by both parties in this Letter of Agreement.

19. FCPF-PIP may suspend this Agreement, in whole or in part, upon written notice, should circumstances arise which jeopardize successful completion of the Activities.

20. This Letter of Agreement shall be governed by the laws of the Kingdom of Cambodia and the language of the Letter of Agreement shall be in English. Any dispute arising out of this agreement, which cannot be amicably settled between the parties, shall be referred to adjudication/arbitration in accordance with the laws of the Kingdom of Cambodia.

21. If you are in agreement with the provisions set forth above, please sign and return to FCPF-PIP office two copies of this LoA. Your acceptance shall thereby constitute the basis of GDANCP/MoE participation in the implementation of the project.

Yours sincerely,

Signed on behalf of FCPF-PIP



H.E Chea Sam Ang, PhD.
Under Secretary of State, MoE
National Project Director
FCPF Project

Date: 23 04 2019

Signed on behalf of GDANCP



Mr. Kim Nong
Deputy General Director
GDANCP/MoE

Date: 23 04 2019



Attachment 2: Sustainable Management of Phnom Kulen National Park

A. Development Challenges

Phnom Kulen (“Kulen Mountain”) is located in the Siem Reap Province, about 48 km from the provincial town of Siem Reap where Angkor Wat Temples are located. The Phnom Kulen National Park (PKNP) was designed in 1993 and covers 37,375 hectares (ha).

Phnom Kulen has been of great archaeological, cultural, and religious significance. A popular place of pilgrimage, this “Mountain of Lychees” is considered by Khmers to be the most sacred mountain in Cambodia and the birthplace of the Cambodian Kingdom. More than 50 sacred ancient temples and sites dating back as far as the Eighth and Ninth Century have been identified across the high plateau of Phnom Kulen. Preah Ang Thom, 1000 linga is among the most visited sites of Phnom Kulen.

Its forest ecosystems provide critical habitats for several globally threatened species. The significant ecosystem services provided by the Park center on the vital role this largest forested area within Siem Reap Province plays as the main water source for Siem Reap town and the aquifer that maintains the stability of the Temples of Angkor. All the 36 headwaters of the Siem Reap River are located inside PKNP.

Its forest cover, however, has decreased significantly over the past decades, from about 42% in 2003 to as low as 25% presently. The downstream impacts of the depletion of forests in PKNP have the potential to severely affect the future development potential of Siem Reap Province and threaten the foundations of the Angkor World Heritage Site.

One of the main threats to the PKNP forest cover is the damaging agricultural practices and particularly slash and burn, and the illegal but widely spread monoculture of cashew nut. There are currently ten villages on Kulen Mountain, with a total population of around 4,600 people. Most of these villagers are subsistence farmers and these practices represent a direct threat to the park.

To address the growing threats, in 2017, with the support of UNDP/FCPF, the GDANCP/MoE has finalized the Phnom Kulen Management Plan and its Action Plan, to respond to the Phnom Kulen threats. The Action Plan has defined the protection, restoration and maintenance of the forested area, water sources and archaeological sites as priorities. Furthermore, UNDP is assisting the MoE to develop and operationalize Payment for Ecosystem Services (PES) to cover the recurrent cost of park management in the Kulen Mountain.

While these recent efforts are conducive to the successful sustainable management of the national park and its conservation of archaeological sites and sustainable management of ecosystems of PKNP, there is an urgency to respond to eminent threats to deforestation and remaining ecosystems.

B. Purpose and Strategy

B-1 Overall objective

The main objective of the project is to contribute to reduce forest loss and degradation while promoting environmentally sustainable livelihoods and conservation of natural resources and cultural heritage in PKNP.

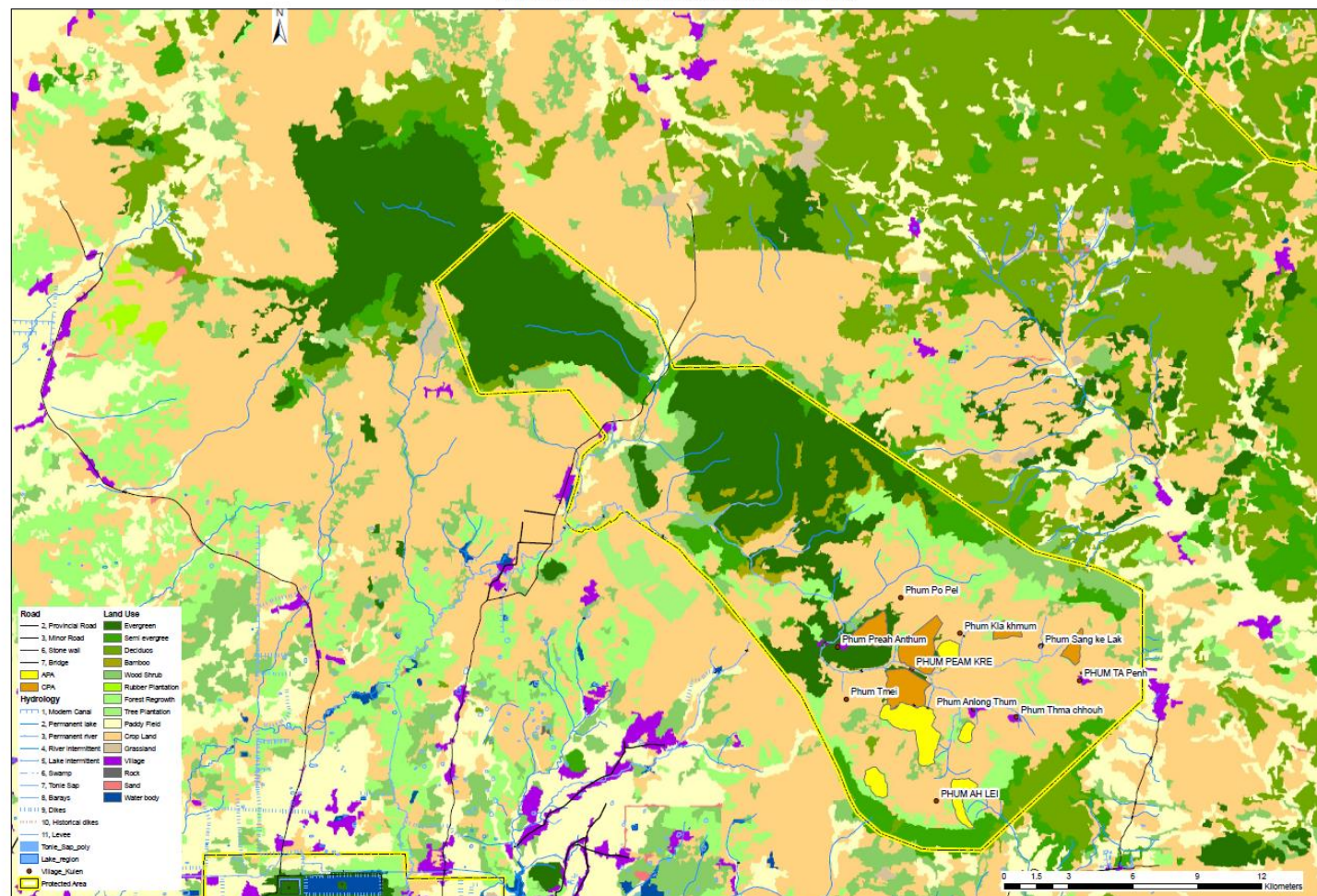
The objective fits into the REDD+ National Strategy (NRS) Strategic Objective (SO) 1: Improve management and monitoring of forest resources and forest land use and SO2: Strengthen implementation of sustainable forest management plan that aims to contribute to national and global climate change mitigation through improving the management of its natural resources and forest lands, and biodiversity conservation and sustainable development.

B-2 Outcomes, outputs and activities

To achieve this objective, this project will focus on the following Strategic Program Areas (SPAs)/outcomes, outputs and key programme activities (PA) defined in the Action Plan of the Kulen Mountain National Park (2018-2027):

- SPA1/outcome1: Strengthen Natural/Cultural Resources Protection and Conservation
 - SPA 1.1/output 1.1: Securing of park boundaries and management zones
 - PA 1.1.1 Complete demarcation of remaining 41 Park boundaries
 - PA 1.1.2 Place boundary poles and large Park signs (in English and Khmer) at main road entrance points and key zoning points
 - PA 1.1.3 Zoning of the PKNP
 - SPA 1.2/output 1.2: Facilitate forest conservation, restoration and maintenance;
 - PA 1.2.2 Initiate reforestation and maintenance in priority site
 - SPA 1.3/output 1.3: Enhancement of law enforcement;
 - PA 1.3.1. Investment in modern equipment for patrolling and law enforcement in PKNP
 - PA 1.3.2. Engage local community in patrolling and monitoring
- SPA2/outcome2: Expand Community Participation and benefits
 - SPA 2.2/output 2: Expand environmentally sustainable livelihood opportunities.
 - PA 2.2.1 Provide support for enhanced development of alternative livelihood options
 - PA 2.2.2 Develop and maintain community-based nursery (CBN)

Land Use - Phnom Kulen National Park



C. Results framework

Core programme (Outcome)	Programme Outputs/Activities	Baseline (2018)	Target Indicators / MoV	Responsible Lead (and support)
1 Secure Park boundaries and management zones	Output 1.1: Complete demarcation of remaining park boundaries			
	1.1.1 Design and place boundary poles		<ul style="list-style-type: none">41¹ remaining boundary poles with clear GPS coordination placed	GDANCP and GDLC with support from PDoE and PKNP, local community, ADF, APSARA
	Output 1.2: Place boundary poles and large Park signs (in English and Khmer) at main road entrance points and key zoning points			
	1.2.1 Design and place zoning sign boards	Some signs and billboards have been placed in CPA sites	<ul style="list-style-type: none">10 signs and billboards designed and placed	GDANCP and GDLC with support from PDoE and PKNP, local community, ADF, APSARA
	1.2.2 Design and install boundary poles along the key strategic zoning points	Some boundary poles have been placed in CPA sites	<ul style="list-style-type: none">50 Poles with clear GPS coordination placedField monitoring report by FCPF PMU & RTS	
	Output 1.3: Zoning of Phnom Kulen National Park			
	1.3.1 Establish PA working Group	- No working group	- MoE decisions/letter	GDANCP and GDLC
	1.3.2 Conduct preliminary analysis			
	A. Training workshop to PDoE & parks staff on land use planning and zoning mapping (LUP&ZM) in PKNP	- N/A	- Training conducted, and training report prepared	GDANCP and GDLC
	B. Produce first draft of LUP&ZM based on existing data	Draft of LUP map available	- First draft of LUP & ZM	GDANCP and GDLC with support from MRV Team
	1.3.3 Data collection and resource assessment			
	A. Conduct field data collection to identify and verify: <ul style="list-style-type: none">- Conduct community zoning, mapping (resident, agriculture, reforestation, water source etc.) and	- N/A	<ul style="list-style-type: none">- Consultations with relevant groups conducted- Environmental and Social Impact	GDANCP and GDLC with support from PDoE and PKNP, local community, ADF, APSARA

¹ This activity will be funded by the MoE budget

Core programme (Outcome)	Programme Outputs/Activities	Baseline (2018)	Target Indicators / MoV	Responsible Lead (and support)
	enhancement options - Preservation of Archaeological and Apsara Sites in collaboration with ADF - Core zone, conservation zone, sustainable use zone and Community zone		- Assessment (ESIA) conducted - Field assessment report prepared	
	B. Produce second draft of LUP&ZM based on finding from field data collection and survey	- Draft of LUP map available	- GIS mapping and ground truth - Second draft of LUP/ZM	GDANCP and GDLC with support from MRV Team
	C. Conduct consultative workshop with stakeholders on the draft LUP/ZM	- N/A	- Consultation workshop conducted	GDANCP and GDLC with support from PDoE and PKNP, local community, ADF, APSARA
	1.3.4 Finalize zoning/mapping and approval of PKNP zones in PA	-		GDANCP and GDLC
	A. National meeting to review and finalize zoning document	- Draft of LUP map available	- Consultations with relevant groups conducted - ESIA conducted	GDANCP and GDLC
	B. Submit zoning document and map for approval	- Draft of LUP map available	- Zoning completed and Sub-decree on PKNP endorsed by MoE	GDANCP and GDLC
	C. Printing and launching of PKNP zoning	N/A	- Official launching event organized, report prepared	GDANCP and GDLC with support from PDoE and PKNP, local community, ADF, APSARA
2 Facilitate forest conservation, restoration and maintenance	Output 2.1: Initiate reforestation and maintenance in priority site			
	2.1.1 Conduct field verification and organization of reforestation activity	N/A	• Field verification report	GDANCP and GDLC with support from PDoE and PKNP, local community, ADF, APSARA
	2.1.2 Undertake reforestation and maintenance activity	- 210,300 local tree species have been	• Map of earlier and proposed reforestation sites	GDANCP and GDLC with support from PDoE and PKNP,

Core programme (Outcome)	Programme Outputs/Activities	Baseline (2018)	Target Indicators / MoV	Responsible Lead (and support)
		reforested covered 74.62 ha ²	<ul style="list-style-type: none"> 15 ha of native species reforested³ 	local community, ADF, APSARA
	2.1.3 Undertake regular maintenance of reforested areas	N/A	<ul style="list-style-type: none"> Field report 	
3 Enhance law enforcement	Output 3.1. Investment in modern equipment for patrolling and law enforcement in PKNP			GDANCP and GDLC with support from PDoE and PKNP, local community, ADF, APSARA
	1. Procure patrolling equipment's		<ul style="list-style-type: none"> 10 GPS with digital cameras Laptop and printer 10 Radios 	
	Output 3.2. Engage local community in patrolling and monitoring			
	1.2.1 Establish community platform or network to strengthen patrolling and monitoring	N/A	<ul style="list-style-type: none"> Joint-patrolling mechanism and patrolling programme for PKNP and local community established. 	GDANCP and GDLC with support from PDoE and PKNP, local community, ADF, APSARA
	1.2.2 Support community patrolling activities	<ul style="list-style-type: none"> 66 forest offense cases monitored in Q1 2019 78.7 ha of forest cleared land temporary confiscated⁴ 	<ul style="list-style-type: none"> Patrolling report prepared 	
4. Expand environmentally sustainable livelihood	Output 4.1 Provide support for enhanced development of alternative livelihood options			
	4.1.1 Assess options for environmentally sustainable livelihoods	N/A	<ul style="list-style-type: none"> Assessment report 	GDANCP and GDLC with support from PDoE and PKNP, local community, ADF
	4.1.2 Training on specific prioritized environmentally	N/A	<ul style="list-style-type: none"> Training report 	

² Source: Provincial Department of Environment (PDoE) record

³ Source: PDoE record

⁴ PDoE /ADF record

Core programme (Outcome)	Programme Outputs/Activities	Baseline (2018)	Target Indicators / MoV	Responsible Lead (and support)
opportunities	sustainable livelihoods options selected by the community			
	4.1.3 Support testing environmentally sustainable livelihood options with local communities	N/A	<ul style="list-style-type: none"> # of poor, vulnerable and IPs community benefited from project 	
	Output 4.2 Develop and maintain community-based nursery (CBN)			
	4.2.1 Training on CBN establishment	N/A	<ul style="list-style-type: none"> Training conducted, and training report prepared 	GDANCP and GDLC with support from PDoE and PKNP, local community, ADF
	4.2.2 Establish and maintain CBN	3 school nurseries established	<ul style="list-style-type: none"> One community-based nursery established 	

2 Implementation Arrangements

a) Implementation

At national level, the project will be managed by GDANCP and GDLC of MoE within the Delegated National Implementation (NIM) modality, in line with FCPF project document where fund will be advanced and or transferred to GDANCP bank account on a quarterly basis based on the approved work plan and budget and request to FCPF-PMU based on the letter of agreement (LoA) between GDANCP and GDLC of MoE and the FCPF-PMU that is output/result based payment. GDANCP and GDLC of MoE will be responsible for the overall management and delivery of project activities to achieve the expected outputs.

Overall coordination and oversight of the project including technical support will be provided by the National REDD+ Focal Points of GDANCP and GDLC who will be responsible for the overall project implementation. They will conduct regularly field monitoring and oversight missions to the ground to ensure smooth operation.

At the field level, the project will be directly implemented by the directors and staff of the Department of Environment and the Phnom Kulen National Parks authorities. The project coordinators based in Seim Reap province will be recruited by the GDANCP and GDLC to work closely on a day to day basis with the PDoE and PKNP to ensure quality and effective project implementation and deliver project activities and results as well as ensure smooth coordination and active involvement from all key stakeholders including local people, local authorities, NGOs actively involved in the project implementation. He/she will be reported to GDANCP/GDLC through Director of PDoE.

b) Monitoring and Evaluation

The quality of the project will regularly be monitored and assured by the FCPF-PMU staff such as the National Project Director and Manager, FCPF-UNDP project support and the RTS staff. In accordance with the UNDP NIM policies and procedures, the project will be results-based monitored against the project results framework (Table 1). Monitoring aims to identify progress towards results, precipitate decisions that would increase the likelihood of achieving results, enhance accountability and learning. Throughout the implementation of the project, FCPF-PMU will strive to build common visions among beneficiaries and stakeholders, to mitigate risks that would hinder the success of the project interventions.

On a quarterly basis, quarterly progress reports towards the completion of key results based on the project results framework (table 1) including final expenditure will be prepared by GDANCP/GDLC submit to FCPF-PMU. The final quarterly report will be end of project report compiling all the progress made during the entire project period.

RTS and FCPF-PMU staff will conduct visits to project to assess first hand project progress. Other members of the Project Board may also join these visits. A RTS and FCPF-PMU Field Visit Report/BTOR will be prepared by the RTS and FCPF-PMU staff and will be circulated no less than one month after the visit to the project team and Project Board members.

End of project evaluation shall be conducted. The evaluation will be included in the FCPF project evaluation and will be carried out by FCPF-PMU. Independent National Evaluation Consultant will be recruited by the FCPF-PMU to undertake evaluation.

c) Partnership Strategy

The project will work with GDANCP in partnership with GDLC, PDoE and Phnom Kulen National Parks staff, CPA communities, Archaeology and Development Foundation (ADF), and APSARA National Authority.

d) Strategy to ensure gender equality

The project fully considers and promotes the gender equality and women's empowerment. Based on the recent assessment of gender mainstreaming into Action and investment Plan of the National REDD+ Strategy, the project will incorporate and implement appropriate recommendations from the assessment throughout the process of project implementation to ensure different roles which women and men play in using natural resources, areas which require improvement in terms of gender equality and women's empowerment, for example, decision making processes and access to knowledge and technology. Among others, possible measures include ensuring equal participation of women in decision making processes as well as in the activities related to zoning, demarcation as well as in other PA activities that will contribute to conserving forest, biodiversity, archeological sites and sustainable use of natural resources.

e) Strategy to ensure safeguards

The project will use the REDD+ Social and Environmental Management Framework (ESMF) that has been developed as part of the Safeguards Information System for Cambodia as a reference to ensure that social and environmental risks that may arise from the implementation of the project activities/actions will be adequately addressed and respected throughout the implementation process. In addition, to ensure transparency on how safeguards have been addressed and respected, GDANCP and GDLC as the lead agencies responsible for the project implementation will document and made available all information demonstrating how safeguards are being implemented. Where necessary and appropriate, the management plan for biodiversity, resettlement, indigenous people and gender will be prepared as outlined in the ESMF.

f) Communications and Visibility

The contribution of the FCPF and UNDP will be acknowledged through display of logos of the FCPF and UNDP on publications produced, events organized, and equipment financed by the projects. The representative from the FCPF-PMU and UNDP will be informed about and invited to the project's events as appropriate.

The FCPF and UNDP support would be mentioned as an essential part of the sustainable management and protection of the parks and the awareness of the local population and local authorities. The signboards installed at the most visited sites and entrance, with the relevant logo, will also bring attention to the visitors on the FCPF and UNDP support to the Phnom Kulen National Park.

3 Activities workplan

[illegible]

[illegible]

4 Schedule of Activities, Facilities and Payments.

Activities	Budget Descriptions	Res. party	2019			2020			Total
			Q2	Q3	Q4	Q1	Q2	Q3	
Outcome 1: Secure Park boundaries and management zones									
Output 1.1: Complete demarcation of parks boundaries									
1.1.1 Cost for boundary placement (labor, material, transport etc.)	Contract		-	-	-	-	-	-	-
Total Output 1			-	-	-	-	-	-	-
Output 1.2: Place boundary poles and large Park signs (in English and Khmer) at main road entrance and key zoning points									
1.2.1 Design and place sign board	Contract	PDoE / GDANCP/GDLC	-	-	-	1,500	1,500	-	3,000
1.2.2 Design and install boundary poles along the key strategic zoning points	Contract	PDoE / GDANCP/GDLC	-	-	-	5,000	5,000	-	10,000
Total output 1.2			-	-	-	6,500	6,500	-	13,000
Output 1.3: Zoning of Phnom Kulen National Park									
1.3.1 Establish PA working Group									
1.3.2 Conduct preliminary analysis									
A. Training workshop to PDoE & parks staff on land use planning and zoning mapping (LUP&ZM) in PKNP	Training	GDANCP/GDLC	1,501	-	-	-	-	-	1,501
B. Produce first draft of LUP&ZM based on existing data	Printing	GDANCP/GDLC	200	-	-	-	-	-	200
1.3.3 Data collection and resource assessment	Travel / meeting	GDANCP/GDLC	-	-	-	-	-	-	-
A. Conduct field data collection to identify and verify zoning	Travel / meeting	GDANCP/GDLC	3,746	5,618	-	-	-	-	9,364
B. Produce second draft of LUP&ZM based on finding from field data collection and survey	Printing	GDANCP/GDLC		200					200
C. Conduct consultative workshop with stakeholders on the draft LUP/ZM	Workshop	GDANCP/GDLC	-	-	5,861	-	-	-	5,861

Activities	Budget Descriptions	Res. party	2019			2020			Total
			Q2	Q3	Q4	Q1	Q2	Q3	
1.3.4 Finalize zoning/mapping and approval of PKNP zones in PA									
A. Produce final draft of zoning document including map	printing	GDANCP/GDLC	-	-	200	-	-	-	200
B. National meeting to review and finalize zoning document	Meeting	GDANCP/GDLC	-	-	-	540	-	-	540
C. Submit zoning document for approval (sub decree preparation)	Meeting	GDANCP/GDLC	-	-	-	100	-	-	100
D. Printing and launching of PKNP zoning and organizing launching event	Printing	GDANCP/GDLC	-	-	-	6,000	-	-	6,000
Total output 1.3			5,447	5,818	6,061	6,640	-	-	23,966
Total outcome 1			5,447	5,818	6,061	13,140	6,500	-	36,966
Outcome 2: Facilitate forest conservation, restoration and maintenance									
Output 2.1: Initiate reforestation and maintenance in priority area									
2.1.1 Conduct field verification and organization of reforestation activity	Travel / meeting	PDoE / GDANCP/GDLC	1,333	-	-	-	-	-	1,333
2.1.2 Undertake reforestation activities	Contract	PDoE/ GDLC GDANCP	-	10,500	10,500	-	-	-	21,000
2.1.3 Undertake regular monitoring and maintenance of reforested areas	Travel/meeting	PDoE/ GDLC GDANCP				500	500	500	1,500
Total output 2.1			1,333	10,500	10,500	500	500	500	23,833
Total outcome 2.1			1,333	10,500	10,500	500	500	500	23,833
Outcome 3: Enhance law enforcement									
Output 3.1 Engage local community in patrolling and monitoring									
3.1.1 Patrolling equipment (GPS, laptop, printer, Radio)	Equipment	GDANCP/GDLC	6,700	-	-	-	-	-	6,700
Total PA 1.3.2			6,700	-	-	-	-	-	6,700
Output 3.2 Engage local community in patrolling and monitoring									
3.2.1 Establish/strengthening community platform or network to strengthen patrolling and monitoring	Travel / meeting	GDANCP/GDLC	-	1,077	-	-	-	-	1,077
3.2.2 Support patrolling activities	Travel /	GDANCP/GDLC	-	2,400	2,400	2,400	2,400	2,400	12,000

Activities	Budget Descriptions	Res. party	2019			2020			Total
			Q2	Q3	Q4	Q1	Q2	Q3	
	meeting								
Total output 3.2			-	3,477	2,400	2,400	2,400	2,400	13,077
Total outcome 3			6,700	3,477	2,400	2,400	2,400	2,400	19,777
Outcome 4: Expand environmentally sustainable livelihood opportunity									
Output 4.1: Provide support for enhanced development of alternative livelihood options									
4.1.1 Assess options for new environmentally alternative livelihoods	Travel / meeting	PDoE/ GDLC GDANCP	1,057	-	-	-	-	-	1,871
4.1.2 Training on specific prioritized livelihoods options selected by the community	contract	PDoE/ GDLC GDANCP	1,012	-	-	-	-	-	1,012
4.1.3 Support testing livelihood options with local communities	Travel / meeting	GDLC/ GDANCP	-	15,000	15,000	-	-	-	30,000
Total output 4.1			2,069	15,000	15,000	-	-	-	32,069
Output 4.2 Development and maintain community-based nursery (CBN)									
4.2.1 Training on CBN establishment	Training	GDLC/ GDANCP		1,100					1,100
4.2.2 Establish CBN	Contract	GDLC/ GDANCP	-	-	4,250	4,250	-	-	8,500
4.2.3 Nursery maintenance	Allowance	GDLC/ GDANCP			2,250	2,250	2,250	2,250	9,000
Total output 4.2			-	1,100	6,500	6,500	2,250	2,250	18,600
Total outcome 4			2,069	16,100	21,500	6,500	2,250	2,250	50,669
Project operation and management									
1. Operation	operation	GDANCP/GDLC	250	250	250	250	250	250	1,500
2. Project Coordinators/Officers	Personnel	GDANCP/GDLC	3,750	3,750	3,750	3,750	3,750	3,750	22,500
3. Regular backstopping and monitoring	Travel/meeting	GDANCP/GDLC	1,000	1,000	1,000	1,000	1,000	1,000	6,000
Total (project operation and management)			5,000	5,000	5,000	5,000	5,000	5,000	30,000
Grand Total			20,548	40,896	45,461	27,540	16,650	10,150	161,245

5 Risks and mitigation strategies

Core Programme	Activities	Potential Risks	Risk Level			Mitigation Strategies
			H	M	L	
SPA 1.1 Secure Park boundaries and management zones	1.1.2. Place large Park signs (in English and Khmer) at main road entrance points	<ul style="list-style-type: none"> - Finding budget for this activity - Designing the signs 			X	- CSR support from Kulen water company or contribution from Park entrance fee to recruit designer, produce the signs, placing them at the selected sites.
	1.1.3. Zoning of Kulen National Park	<ul style="list-style-type: none"> - Absence of explicit evaluation of park zoning process and outcomes - Lack of comprehensive socio-economic and environmental knowledge of the park to facilitate decision making process - Accounting for historical/ existing land uses within the park - Enforcement and implementation of uses of zoned areas - Increased conflicts over land and resource uses - Lack of administrative and financial supports before, during and after zoning activities - Difficulty in identifying customary property rights, which could be also be political in nature - Equity of access resulting in inter-community conflicts over resources and land access when creating areas of varying extraction rates and zones 	X			<ul style="list-style-type: none"> - Apply participatory 3-Dimensional modeling and community integrated geographic information technology (qualitative zoning) to emphasize community participation in the mapping and zoning process to capture the cultural importance of land as well as geographic characteristics. - Utilize Geographic Information System (GIS) to support the capture, management, manipulation, analysis, modeling, and display of spatially referenced data for solving complex planning and management problems in decision making processes. - Formulate a quantitative method to “expeditiously zone” protected areas by assigning potential land uses based on land aptitude, priority of use, biodiversity conservation, and the influence of the surrounding areas. - Rely on remotely sensed images to enable decision-makers to see and compare large areas of land and to differentiate land types. In this technique, zones are delineated according to the analysis and weighting of land attributes such as type of soil, topography, hydrology, and prevalent agricultural use. - Recognize the evolving, place specific nature of governance over social ecological systems; at the same time emphasize collaborative planning and decision-making among multiple stakeholders that cross community, regional and national levels. - Involves a variety of decision-makers with divergent backgrounds and interests and seeks to bring these voices and interests into the planning process as a way of reconciling individual approaches and leading to satisfactory solutions for all participants on proposed zones.
SPA1.2. Facilitate	1.2.1 Identify areas	<ul style="list-style-type: none"> - Lack of accurate spatial information to help 		X		- Collaborate with NGOs working within the park and use their spatial information plus ground

forest conservation, restoration and maintenance	suitable for natural regeneration and priority areas for reforestation	identify the areas - Lack of areas in the parks for reforestation			verification to identify areas for reforestation activities
	1.2.2. Initiate reforestation and maintenance in priority sites	- Lack of budget required for reforestation and maintenance activities as it is a very costly activity - Low survival rates of reforested seedling		x	- In addition to government allocation budget, mobilize resources from development partner's projects such as Adaptation Fund to reach this target - Conduct soil analysis and relevance assessment to ensure survival rate and species suitability prior to reforestation
SPA 1.3 Enhanced Law enforcement	1.3.1 Invest in modern equipment for patrolling and law enforcement	- Lack of technical knowledge to properly use these modern equipment		x	- Ensure that all APAs and CPAs are demarcated and awareness raising campaigns should be conducted - PKNP Management Committee serves as the focal point to help address conflicts within the CPAs Management Committees
	1.3.2. Engage local community in patrolling and monitoring	- Lack of supports from local communities - Poor collaboration between local authorities, rangers and local communities in conducting patrolling and law enforcement.		x	- Verify the authentic identify of monks involved in the expansion of pagoda grounds as some of them do not look like monks/ recent migrants pretending to be monks to grab lands
SPA 2.2 Expand environmentally sustainable livelihood opportunities	2.2.1 Provide support for enhanced development of alternative livelihoods options	- Difficult in identifying options that are as competitive as Cashew nut farms - Lack of buy-in from local communities in the new livelihood options		x	-Conduct relevance studies/assessment to identify options that are as competitive as cashew nut farms - Provide training and testing sites for the new livelihood options
	Develop and maintain forest nurseries of local species that can be used for reforestation	-Lack of land area for nurseries - Lack of maintenance and support		x	-Once zoning is completed there should be more areas opened up that could be used as nurseries. Also, public place such as school - Maintain and support could derive from sale of seedling for reforestation activities within the park

Attachment 1: Statistic of reforested areas in PKNP 2015-2018

តារាងបច្ចុប្បន្នភាពកម្មវិធីដាំដើមឈើនៅក្នុងឧទ្យានជាតិព្រះជ័យវរ្ម័ន-នរោត្តម-ភ្នំគូលែន ឆ្នាំ ២០១៥ ដល់ ២០១៨

2018										
ល.រ	ឈ្មោះអង្គការ សហគមន៍	កាលបរិច្ឆេទ	ចំនួនប្រភេទកូនឈើ				និយាមកា		ទីតាំងដែលបានដាំ (ឈ្មោះសហគមន៍)	ផ្សេងៗ
	Organization		ហូបផ្លែ	ប្រណិត	សរុប	ហិកតា	Coordinate			
1	MoE, PDOE, ADAPTA TION FUND, UNEP, ADF, API, ម ស ប, idp, CANS, AAAC, អាជ្ញាធរមូលដ្ឋាន	2018 06 -04		បេង ឆ្នង គគី ក្រញូង	20,000	10.2	405238	1498115	North of Phum Thmey	
2	MoE, PDOE, ADAPTA TION FUND, UNEP, ADF, ALTP Primary school, SKL Primary school អាជ្ញាធរមូលដ្ឋាន	2018 08 29		យោង បេង	15,000	2.4	408201	1498934	Chup Ta Sok CPA	
3	Apsara Authority	2018 04 1-27 2018 05 2-25		វិជ្ជុល គគី កកោះ បេង នាងនួន អង្កាញ	3,000	1.5	414527	1498031	ចំណកគគី ភូមិគោមព្យ ៥០០ ម៉ែត្រ សង់ខាងផ្លូវ	
4	នាយកដ្ឋានអភិរក្សតំបន់ការពារធម្មជាតិដីគោកខាងជើងបឹងទន្លេសាប	21.09.2018		កូនឈើគគី កូនឈើ ប្រេស ឈើទាល	35,000	7.3	404401	1496400	ភូមិថ្មី ផ្លូវទៅស្រះដំរី	នាយកដ្ឋានអភិរក្សដីគោកខាងជើងបឹងទន្លេសាប បាន សហការណ៍ជាមួយមន្ទីរហិរញ្ញវត្ថុ នាយក នាយករង ប្រជាសហគមន៍ អាជ្ញាធរមូលដ្ឋាន និងឧទ្យានរក្សឧទ្យានជាតិ (ភ្នំគូលែន) ខេត្តសៀមរាប និងក្រុមលទ្ធកម្ម របស់អគ្គ.អកជ បានដាំស្ករព្រៃឈើឡើងវិញនៅតាមតំបន់ដែលបាន ប្រគល់ដីជូនរដ្ឋវិញសង្វាងចំណីផ្លូវសាងសង់ថ្មីចំងាយ 32.12 និង ដីដែលបានដកហូតពីការ ហ៊ុមព័ន្ធ ការរុករានដោយខុសច្បាប់។
				Total	73,000	21.4				
2017										
1	ADAPTATION FUND in from of Minister Plan	2017 05 23	15,000		?	3.1	395373	1505018	ភូមិវិះកាត់	
2	ADAPTATION FUND	2017 04 04			50,000	11	399592	1501911		

3	ADAPTATION FUND	2017 06 02			5000	0.32	401011	1500707	ថ្មបីជុំ (ថ្មប៉ាខាំ)	
4	ADAPTATION FUND	2017 07 22			4000	2.3	401657	1501094	ខាងកើតឈាងខាង ជើងថ្មប៉ាខាំ	
5	ADAPTATION FUND	2017 07 18	15000		50000	3.5	412968	1496188	ភូមិថ្មជ្រួញ (ចំការសិង្ហអ្នកព្រះអង្គធំ)	
6	ADAPTATION FUND, AFD	2017 07 29			2000	0.8	408623	1495494	ស្រែត្បូងខាងលិច	
8	ADAPTATION FUND, AFD	2017 07 29			2000	1	408942	1495488	ស្រែត្បូងខាងកើត	
9	ADAPTATION FUND	2017 08 06			3000	1.8	408923	1496090	ថ្នល់ម្រេច	
10	ADAPTATION FUND	2017 07 22			?	2.3	407798	1498516	ព្រៃសហគមន៍ជប់តាសុក (ចំការតាអើម)	ខូចខាតស្ទើរទាំងស្រុងដោយសារក្តៅពេក
					116,000	29.22	ទិន្នន័យសរុបបានពីគម្រោងមូលនិធិបន្ត			
2016										
1	REDD+ PROJECT	2016			5000	6.5	401964	149870	ចំការអ្នកឃុំត្បូង	
2	ស្ទឹងការនគរបាលខេត្ត	2016			300	6.2	402919	1498548	ចំការព្យាបាលអ្នកសៀមរាប ទៅទិញផ្ទះនៅភូមិថ្មី	
3	ADAPTATION FUND	2016			7000	1.3	406435	1499120	ចំការតាពិនភូមិអន្លង់ធំ	
Total					12,300	14				
2015										
1	APSARA	2015 07 24			5000	10	409802	1496098	ក្នុងតំបន់ការពារបុរាណដ្ឋានជុំវិញប្រាសាទអ្នកតា	មានម្ចាស់ចំការកាត់ចោលខ្លះ
Total					5,000	10				
កូនឈើសរុប (ដើម)					206,300					
កូនឈើសរុប (ហិកតា)					74.62					

ANNEX 3: MODEL PROJECT NARATIVE AND FINANCIAL PROGRES REPORT



*Empowered lives.
Resilient nations.*

Forest Carbon Partnership Facility REDD+ Readiness Project (FCPF-II)

NARRATIVE AND FINANCIAL PROGRESS REPORT

Sustainable Management of Phnom Kulen National Parks

Period: from d/m/y to d/m/y

Contents

I.	<u>NARATTIVE PROGRESS SUMMARY (MAXIMUM 2 PAGES)</u>	26
II.	<u>IMPLEMENTATION PROGRESS</u>	27
	2.1 <u>PROGRESS TOWARDS PROJECT OUTPUTS</u>	27
	2.2 <u>CAPACITY DEVELOPMENT</u>	29
	2.3 <u>GENDER MAINSTREAMING</u>	29
	2.4 <u>ENVIRONMENT AND SOCIAL SAFEGUARD</u>	29
III.	<u>IMPLEMENTATION CHALLENGES</u>	29
	A. <u>KEY CHALLENGES AND ISSUES</u>	29
	B. <u>LESSON LEARNS</u>	29
IV.	<u>NEXT WORK PLAN</u>	29
V.	<u>FINANCIAL STATUS AND UTILIZATION</u>	30
VI.	<u>ANNEXURE</u>	32
	C. <u>TECHNICAL AND FIELD REPORTS</u>	32
	D. <u>CHARTS, TABLES, PICTURES</u>	32
	E. <u>ETC</u>	32

I. NARRATIVE PROGRESS SUMMARY (Maximum 2 pages)

Guidance note: The narrative progress summary is not a background note. It is a summary of the progress achieved towards meeting project outputs and or outcomes during the reporting period.

II. IMPLEMENTATION PROGRESS

2.1 PROGRESS TOWARDS PROJECT OUTPUTS

#	Outcomes/Outputs / Activities	Target	Progress status (Quarter)	Cumulative progress	% Completed
1	Secure Park boundary and management zone				
1.1	Complete demarcation of remaining park boundaries				
1.1.1	Design and place boundary poles				
1.2	Place boundary poles and signboards along the key strategic zoning points				
1.2.1	Design and install sign boards				
1.2.2	Design and install boundary poles				
1.3	Zoning of Phnom Kulen National Park				
1.3.1	Establish PA working Group				
1.3.2	Conduct preliminary analysis				
A	Training workshop to PDoE and PKNP staff on land use planning and zoning mapping (LUP&ZM)				
B	Produce first draft of LUP&ZM based on existing data				
1.3.3	Data collection and resource assessment				
A	Conduct field data collection to identify and verify zoning				
B	Produce second draft of LUP&ZM based on finding from field data collection and survey				
C	Conduct consultative workshop with stakeholders				
1.3.4	Finalize zoning/mapping and approval of PKNP zones in PA				
A	Produce final draft of zoning document including map				
B	National meeting to review and finalize zoning document				
C	Submit zoning document for approval				
D	Printing and launching of PKNP zoning				
2	Facilitate forest conservation restoration and maintenance				
2.1	Initiate reforestation and maintenance in priority areas				

#	Outcomes/Outputs / Activities	Target	Progress status (Quarter)	Cumulative progress	% Completed
2.1.1	Identify area suitable for reforestation activity				
2.1.2	Undertake reforestation activity				
2.1.3	Undertake regular monitoring and maintenance of reforested areas				
3	Enhance law enforcement				
3.1	Investment in modern equipment for patrolling and law enforcement				
3.1.1	Procurement of patrolling equipment				
3.2	Engage local community in patrolling and monitoring				
3.2.1	Establish community and PKNP platform or network to strengthen patrolling and monitoring				
3.2.1	Support community patrolling activities				
4	Expand environmentally sustainable livelihood opportunities				
4.1	Provide support for enhanced development of alternative livelihood options				
4.1.1	Assess options for new environmentally alternative livelihood				
4.1.2	Support pilot testing of livelihood options with local community				
4.1.3	Regular backstopping and monitoring				
4.2	Development and maintenance of community-based nursery				
4.2.1	Train local community on CBN establishment and maintenance				
4.2.2	Establish and maintain CBN				

2.2 CAPACITY DEVELOPMENT

2.3 GENDER MAINSTREAMING

2.4 ENVIRONMENT AND SOCIAL SAFEGUARD

III. IMPLEMENTATION CHALLENGES

Guiding note: This section identifies, and analyses project implementation challenges and issues faced that had an impact on project deliverables/results (quality, schedule...etc.) of an activity during the reporting period and mitigation action taken or will be taken to overcome these challenges or issues.

- a. Key Challenges and issues
- b. Lesson Learns

IV. NEXT WORK PLAN

Guiding note: This section provided an overview of key work plan and schedule for next quarter/advance.

No.	Activity	Proposed date	Remarks
1			
2			
3			
4			
5			

V. FINANCIAL STATUS AND UTILIZATION

Period: day/month/year - day/month/year

#	Outcomes/Outputs / Activities	Planned budget (USD)	Payments and Expenditures		
			Payment received	Expenditure	Balance
1	Secure Park boundary and management zone				
1.1	Complete demarcation of remaining park boundaries				
1.1.1	Design and place boundary poles				
1.2	Place boundary poles and signboards along the key strategic zoning points				
1.2.1	Design and install sign boards				
1.2.2	Design and install boundary poles				
1.3	Zoning of Phnom Kulen National Park				
1.3.1	Establish PA working Group				
1.3.2	Conduct preliminary analysis				
A	Training workshop to PDoE and PKNP staff on land use planning and zoning mapping (LUP&ZM)				
B	Produce first draft of LUP&ZM based on existing data				
1.3.3	Data collection and resource assessment				
A	Conduct field data collection to identify and verify zoning				
B	Produce second draft of LUP&ZM based on finding from field data collection and survey				
C	Conduct consultative workshop with stakeholders				
1.3.4	Finalize zoning/mapping and approval of PKNP zones in PA				
A	National meeting to review and finalize zoning document				
B	Submit zoning document for approval				
C	Printing and launching of PKNP zoning				
2	Facilitate forest conservation restoration and maintenance				
2.1	Initiate reforestation and maintenance in priority areas				
2.1.1	Identify area suitable for reforestation activity				
2.1.2	Undertake reforestation activity				
2.1.3	Undertake regular monitoring and maintenance of reforested areas				

#	Outcomes/Outputs / Activities	Planned budget (USD)	Payments and Expenditures		
			Payment received	Expenditure	Balance
3	Enhance law enforcement				
3.1	Investment in modern equipment for patrolling and law enforcement				
3.1.1	Procurement of patrolling equipment				
3.2	Engage local community in patrolling and monitoring				
3.2.1	Establish community and PKNP platform or network to strengthen patrolling and monitoring				
3.2.1	Support community patrolling activities				
4	Expand environmentally sustainable livelihood opportunities				
4.1	Provide support for enhanced development of alternative livelihood options				
4.1.1	Assess options for new environmentally alternative livelihood				
4.1.2	Support pilot testing of livelihood options with local community				
4.1.3	Regular backstopping and monitoring				
4.2	Development and maintenance of community-based nursery				
4.2.1	Train local community on CBN establishment and maintenance				
4.2.2	Establish and maintain CBN				

Approved by:

Prepared by:

Name:.....

Name:.....

Title:.....

Title:.....

VI. Annexure

- c. Technical and field reports
- d. Charts, tables, pictures
- e. Etc.